



**Susan Lacey**

*President*

**Brian Wallace**

*Vice President/  
Treasurer*

**Steve Fargan**

*Vice President/  
Communications*

1890 Donald Street  
Reno, Nevada 89502

775-828-6732

800-232-6732 **Toll Free**

775-828-6745 **Fax**

-----  
*The UCN Newsletter  
is published quarterly.*

## Useful Communications and News

### Featured in this issue:

- Page 2 - Randy Cahill**
- Page 3 - Editorial Page**
- Page 4 - 2011 NEA Pacific Regional Leadership Conference**
- Page 5 - Discount Season Passes at Kirkwood**
- Page 6 - UCN Elections**



### Visit the NEA Member Benefits Website

To find out more about Insurance Programs, Financial Services, Member Discounts, Tools and Tips, Free Giveaways, and Featured Offers click on the links at the NEA Member Benefits Website:

**<http://www.neamb.com/>**

# Randy Cahill



Randy, his fiancé Polly Fraser, and their pro-union dog attending a legislative rally on April 13, 2009.

Randall Clyde Cahill passed away suddenly April 4<sup>th</sup>, 2011 at St. Mary's Hospital in Reno, NV. Randy was born January 26<sup>th</sup>, 1950 in San Diego, CA to Clyde Cahill and Juanita Janeck Cahill. Many of us know Randy as an Organization Specialist or Uniserv Director for NSEA. Randy helped hundreds of educators throughout the state with their jobs, benefits, retirement and quality of life. Randy had incredible negotiation skills and unique ability to arbitrate even the most complicated cases.

Randy was also politically active and worked in many campaigns for legislative candidates including former Assemblyman Bernie Anderson. Randy attended several Democratic Party meetings and was delegate to at least one state Democratic convention.

Randy was loved by many and even those who didn't agree with him respected his passion, intelligence, strength, capability and most importantly his "bigger than life" personality. You only had to meet Randy once to remember him for a lifetime, his laughter and personality were evenly matched with his incredible ability to engage you in a memorable story or tell you one of his many great jokes.

To find out more about Randy and to share your stories visit Caring Bridge:

<http://www.caringbridge.org/visit/randycahill>

Editorial Page by Newsletter Editor Steve Fargan

## Reverse Robin Hood

You should be familiar with Robin Hood. He is known for "robbing from the rich and giving to the poor." Current proposals by Nevada Governor Brian Sandoval are the reverse of this. His proposals are to balance the budget by cutting the wages and benefits of educators in order to maintain tax breaks for the wealthy corporations. Cutting the wages and benefits of educators is equivalent to a tax to a select group. This hidden tax under other names is still a tax. It is robbing from the poor and the middle class to give to the rich. Another example of the Governor's reverse Robin Hood actions are his proposals to cut funding to public education on one hand while provide vouchers for private schools on the other hand. Hopefully our state legislators will take action to turn things around. I encourage you to contact your legislators to make educators and education a priority.

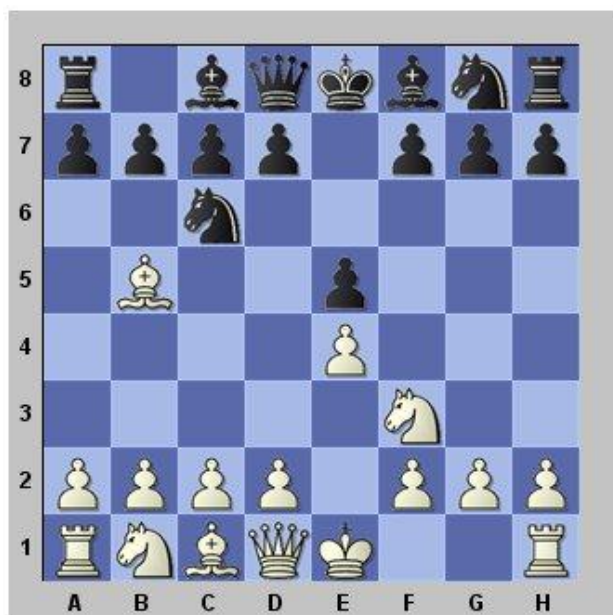
## Attacking the Defender

In the game of chess one of the most popular or frequently used openings is the Ruy Lopez, also known as the Spanish Opening. It starts with 1. e4 e5 2.Nf3 Nc6 3.Bb5 and has a lot of variations. In chess white moves first.

1. e4 e5 (The white pawn moves forward two squares then the black pawn responds by also moving two squares and in blocking the white pawn neither can continue to move forward.)
2. Nf3 Nc6 (The white knight moves ahead to f3 attacking the black pawn on e5. Then the black knight moves to c6 to defend the attacked pawn on e5.)
3. Bb5 (The white bishop moves to b5 attacking the black knight on c6.)

Let's look at this in another way. Think of the white pieces as those people who are attacking educators and the black pieces as educators and the defenders of educators.

1. e4 e5 (After seeing an aggressive move against education (white pawn to e4) we move ahead to stop this action (black pawn to e5.)
2. Nf3 Nc6 (Next, they send another attack. This time threatening the educator (white knight to f3.) The black knight moves to c6 to defend the educator under attack. This could be seen as NEA, NSEA, or your local association defending a member.
3. Bb5 (This time they attack the defender (white bishop to b5.)



If you are familiar with chess you know that there are a wide variety of responses to this. Even if you are not familiar with chess you can see how crucially important it is to respond when those who defend education are under attack. What is our next move? It needs to be a smart move.

We need to stick together and support each other. We need to stay informed and take strong timely appropriate action. A good place to do this is the NSEA Legislative Action Center. Here is a link:

<http://www.nsea-nv.org/home/24.htm>

This is much more than a game. Act now!

## 2011 NEA Pacific Regional Leadership Conference

By Steve Fargan

I attended the NEA Pacific Regional Leadership Conference in Portland, Oregon the weekend of February 25-27, 2011.

On Friday night, NEA President, Dennis Van Roekel's fiery speech helped to get us off to a fantastic start.

On Saturday I attended four sessions. Two sessions were held Saturday morning and two sessions were held Saturday afternoon.

The first session I attended on Saturday morning was "Association in Action: Creating Change Through Social Justice." This session had two presenters Carl Bullard and Joe Bento. I was so impressed with the thought provoking ways of the presenters that I attended another different session they gave later that morning, "Taking a Stand: Creating Safe Schools for All Students."

At lunch NEA Secretary-Treasurer, Becky Pringle introduced keynote speaker Dr. Yong Zhao.

On Saturday afternoon I attended two sessions of "Yoga in the Classroom." This session was presented by Julianne Dauble, a teacher from the state of Washington. We were able to participate in a yoga session and feel for ourselves the benefits of yoga and also hear about how it helps Julianne's students. After the first session I was asked to help with the second session. In addition to helping out I also was able to learn much more.

On Sunday morning the keynote speaker was NEA Vice President, Lily Eskelsen. Lily's speech and PowerPoint presentation was entertaining and uplifting. Here is a quote from Lily's speech that I found to be inspiring: "The purpose of NEA is to bring joy to our students."

I also met and had discussions with many other teachers from the eight states of the Pacific Region throughout the weekend.

I appreciate the opportunity I was given in being able to attend the NEA Pacific Regional Leadership Conference. I would be happy to share more details about the conference with interested teachers.



NEA Vice President, Lily Eskelsen



Skier: Ron Shevock, Photo taken by Steve Fargan

## Discount Season Passes at Kirkwood

The Ormsby County Education Association and Lyon County Education Association have teamed up again to offer discounted season passes at Kirkwood. We have expanded our team to include members of any local affiliate of the Uniserv Council of Nevada, the Nevada State Education Association or the National Education Association. Kirkwood has expanded the offer to include your family, friends, and even friends of friends. Below are some details on the best deal on an unrestricted Kirkwood 2011-2012 Network pass.

- There are no blackout dates.
- Never miss a powder day.
- Ski or ride any weekend, any holiday and never have to wait in a ticket window line.
- Kirkwood gets the deepest and driest snow in the Sierra Nevada Mountains.

### **The price is currently only \$299\* per pass!**

(Order early to get next season's pass at a lower price.)

Network Pass Benefits: 2 per day \$10 off buddy tickets on weekends and holidays (\$20 off midweek), 20% off Sun-Friday lodging, 10% off logo items and pass holder pricing at ShopKirkwood.com.

Greetings! As your 11/12 Kirkwood Network Pass Representative, I'm happy to share with you this sale price of just \$299\* - the lowest of the season and the best deal anywhere, anytime on a full, every day, all day, unrestricted winter of Tahoe's best skiing and riding! Take advantage of this early-bird deal and purchase using the login below:

Network Log In: **fargan**

Network Password: **kirkwood68**

Purchase Your Pass Here:

<http://www.kirkwood.com/networkpass>

or

<https://skikirkwood.com/e-commerce/grpLogin2.aspx>

\*The first scheduled increase on the Network Pass rates is at the end of May. Final Network Pass price is \$499.

Contact [Steve Fargan](mailto:lolo@loloville.com) at: [lolo@loloville.com](mailto:lolo@loloville.com) (home e-mail) if you have any questions.

# UCN Elections

## 2011 UCN Election Results

Here are the election results for the NSEA Board of Directors for UCN Region A:

241 Ballots received

160 votes for Brian Wallace

80 votes for Mary Baird

1 invalid ballot

Brian Wallace has been elected to the NSEA Board of Directors for UCN Region A for a 3 year term.

## 2012 UCN Elections

In 2012 the following UCN offices/positions will be up for election:

- UCN President (2 year term)
- UCN Vice President/Treasurer (2 year term)
- UCN Vice President/Communications (2 year term)
- UCN Delegate to NEA Representative Assembly Region A (2 year term)
- UCN Delegate to NEA Representative Assembly Region B (2 year term)
- UCN Delegate to NEA Representative Assembly Region C (2 year term)
- Region B seat on NSEA Board of Directors (3 year term)